

## Section A, Instructions

TIMES

MATERIALS

INSTRUCTIONS

STRUCTURE

EXIT

### Section A

1 2

3 4

5 6

7 8

9 10

11 12

13 14

15 16

17 18

19 20

### Section B

1 2

3 4

5 6

7 8

9 10

11 12

13 14

### Section C

Brief Guide

1 2

Demo Concept

1 2

### SECTION A – Multiple-choice questions

**20 marks**

Answer **all** questions.

Choose the response that is correct or that best answers the question.

Click the button next to the correct answer. Your answer is confirmed in the box at the base of the question.

Each question is worth one mark. Marks will not be deducted for incorrect answers.

Answers will be automatically saved.

You can review and/or change your answers at any stage.

BACK

NEXT

## Section A, Question 1

TIMES

MATERIALS

INSTRUCTIONS

STRUCTURE

EXIT

### Section A

1

2

3

4

5

6

7

8

9

10

11

12

13

14

15

16

17

18

19

20

### Section B

1

2

3

4

5

6

7

8

9

10

11

12

13

14

### Section C

Brief

Guide

1

2

Demo

Concept

1

2

Which creative-thinking technique should be used before designing a promotional poster?

- A storyboard
- B evaluation survey
- C brainstorming
- D wireframing

Selected response:

Click on an answer button (A, B, C or D) or use the keyboard to select your answer.

BACK

NEXT

## Section A, Question 2

TIMES

MATERIALS

INSTRUCTIONS

STRUCTURE

EXIT

## Section A

1 2

3 4

5 6

7 8

9 10

11 12

13 14

15 16

17 18

19 20

## Section B

1 2

3 4

5 6

7 8

9 10

11 12

13 14

## Section C

Brief Guide

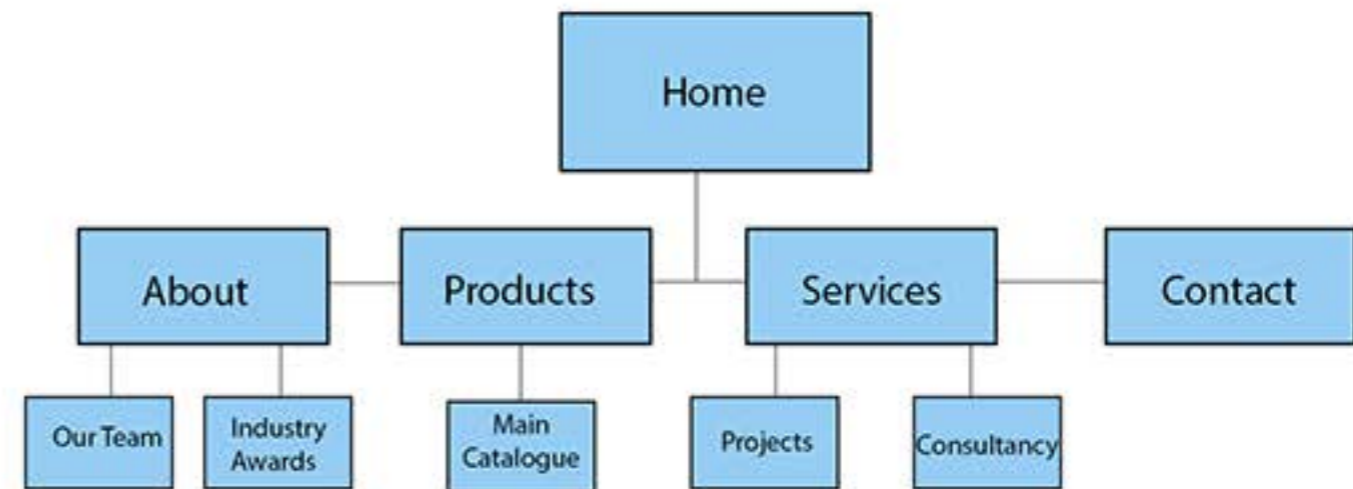
1 2

Demo Concept

1 2

The diagram shows a website structure that is

- A linear.
- B cyclical.
- C breadcrumb.
- D hierarchical.

Selected response: 

Click on an answer button (A, B, C or D) or use the keyboard to select your answer.

BACK

NEXT

## Section A, Question 3

TIMES

MATERIALS

INSTRUCTIONS

STRUCTURE

EXIT

### Section A

1

2

3

4

5

6

7

8

9

10

11

12

13

14

15

16

17

18

19

20

### Section B

1

2

3

4

5

6

7

8

9

10

11

12

13

14

### Section C

Brief

Guide

1

2

Demo

Concept

1

2

Why does artwork need to be reviewed against the technical requirements stated in the design brief?

- A to ensure the artwork meets the purpose of the project
- B to ensure the project is completed according to the planned timeline
- C to ensure the client is happy with the final artwork
- D to check the requirements of the design process

Selected response:

Click on an answer button (A, B, C or D) or use the keyboard to select your answer.

BACK

NEXT

## Section A, Question 4

TIMES

MATERIALS

INSTRUCTIONS

STRUCTURE

EXIT

### Section A

1 2

3 4

5 6

7 8

9 10

11 12

13 14

15 16

17 18

19 20

### Section B

1 2

3 4

5 6

7 8

9 10

11 12

13 14

### Section C

Brief Guide

1 2

Demo Concept

1 2

Which safe ergonomic practice should be followed when looking at a screen for a long period?

- A Maintain correct distance between eyes and monitor.
- B Use equipment with a high Energy Rating.
- C Use correct manual handling procedures.
- D Report unsafe practice to supervisor.

Selected response:

Click on an answer button (A, B, C or D) or use the keyboard to select your answer.

BACK

NEXT

## Section A, Question 5

TIMES

MATERIALS

INSTRUCTIONS

STRUCTURE

EXIT

## Section A

1

2

3

4

5

6

7

8

9

10

11

12

13

14

15

16

17

18

19

20

## Section B

1

2

3

4

5

6

7

8

9

10

11

12

13

14

## Section C

Brief

Guide

1

2

Demo

Concept

1

2

The effect of the car travelling from the background to the foreground in the animation is created by making changes between keyframes to

- A scale.
- B frame rate.
- C alpha values.
- D secondary action.



Selected response:

Click on an answer button (A, B, C or D) or use the keyboard to select your answer.

BACK

NEXT

## Section A, Question 6

TIMES

MATERIALS

INSTRUCTIONS

STRUCTURE

EXIT

### Section A

1 2

3 4

5 6

7 8

9 10

11 12

13 14

15 16

17 18

19 20

### Section B

1 2

3 4

5 6

7 8

9 10

11 12

13 14

### Section C

Brief Guide

1 2

Demo Concept

1 2

Which HTML code will successfully insert an image of a dog onto a web page?

- A ``
- B `<img src=dog.jpg>`
- C `<img src=dog.bmp>`
- D ``

Selected response:

Click on an answer button (A, B, C or D) or use the keyboard to select your answer.

BACK

NEXT

## Section A, Question 7

TIMES

MATERIALS

INSTRUCTIONS

STRUCTURE

EXIT

### Section A

1

2

3

4

5

6

7

8

9

10

11

12

13

14

15

16

17

18

19

20

### Section B

1

2

3

4

5

6

7

8

9

10

11

12

13

14

### Section C

Brief

Guide

1

2

Demo

Concept

1

2

What does the term '24-bit colour' refer to?

- A 16 777 216 colours
- B 256 colours
- C 65 536 colours
- D 300 ppi

Selected response:

Click on an answer button (A, B, C or D) or use the keyboard to select your answer.

BACK

NEXT



## Section A, Question 8

TIMES

MATERIALS

INSTRUCTIONS

STRUCTURE

EXIT

### Section A

1

2

3

4

5

6

7

8

9

10

11

12

13

14

15

16

17

18

19

20

### Section B

1

2

3

4

5

6

7

8

9

10

11

12

13

14

### Section C

Brief

Guide

1

2

Demo

Concept

1

2

In an animation, applying ease-in to a motion tween causes the symbol to

- A move.
- B accelerate.
- C decelerate.
- D bounce.

Selected response:

Click on an answer button (A, B, C or D) or use the keyboard to select your answer.

BACK

NEXT

## Section A, Question 9

TIMES

MATERIALS

INSTRUCTIONS

STRUCTURE

EXIT

### Section A

1

2

3

4

5

6

7

8

9

10

11

12

13

14

15

16

17

18

19

20

### Section B

1

2

3

4

5

6

7

8

9

10

11

12

13

14

### Section C

Brief

Guide

1

2

Demo

Concept

1

2

According to the Australian Press Council, organisations are free to report facts and express opinions as long as the organisations follow the code of practice.

Which one of the following is part of the code of practice?

- A There is no need to acknowledge or check sources.
- B Ensure that any opinion is balanced by an opposing point of view.
- C Ensure that content is accurate and clear.
- D Make up and publish fake news.

Selected response:

Click on an answer button (A, B, C or D) or use the keyboard to select your answer.

BACK

NEXT

## Section A, Question 10

TIMES

MATERIALS

INSTRUCTIONS

STRUCTURE

EXIT

## Section A

- |    |    |
|----|----|
| 1  | 2  |
| 3  | 4  |
| 5  | 6  |
| 7  | 8  |
| 9  | 10 |
| 11 | 12 |
| 13 | 14 |
| 15 | 16 |
| 17 | 18 |
| 19 | 20 |

## Section B

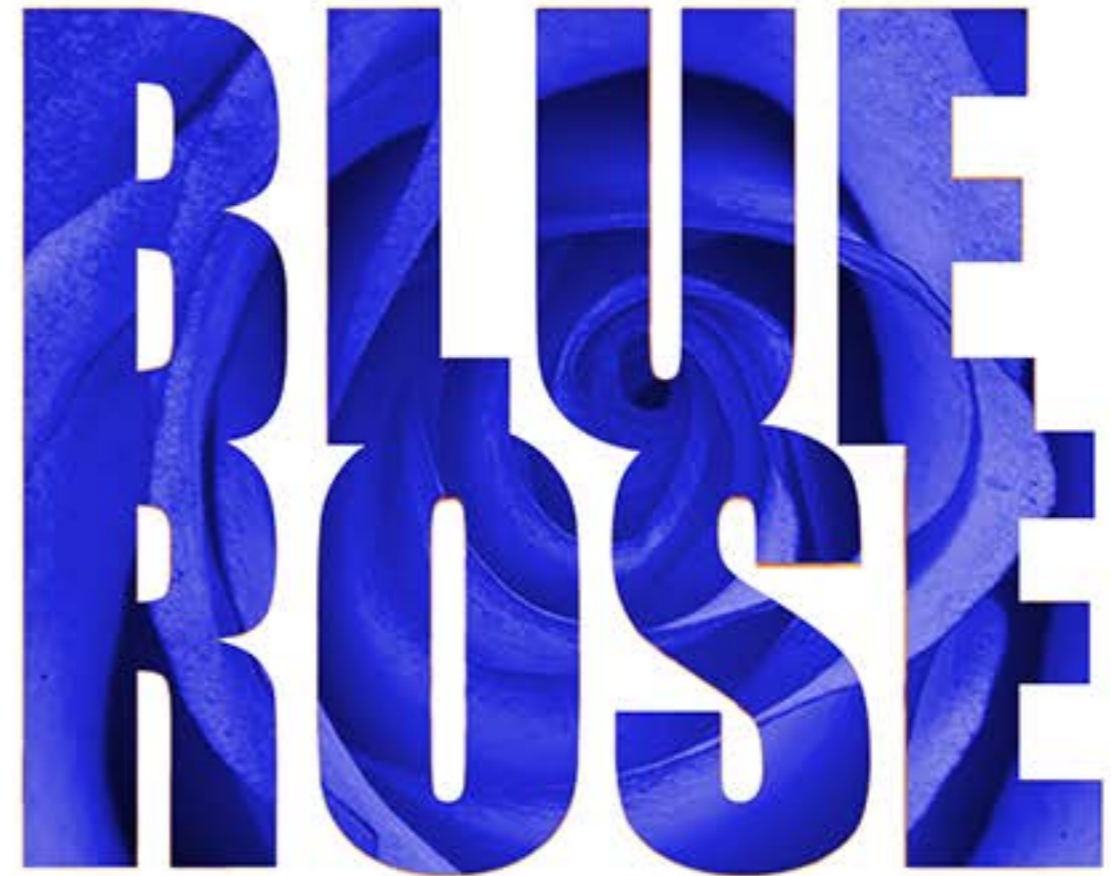
- |    |    |
|----|----|
| 1  | 2  |
| 3  | 4  |
| 5  | 6  |
| 7  | 8  |
| 9  | 10 |
| 11 | 12 |
| 13 | 14 |

## Section C

- |       |         |
|-------|---------|
| Brief | Guide   |
| 1     | 2       |
| Demo  | Concept |
| 1     | 2       |

Which typographical spacing technique does the image use?

- A kerning
- B tracking
- C leading
- D cropping



Selected response:

Click on an answer button (A, B, C or D) or use the keyboard to select your answer.

BACK

NEXT

## Section A, Question 11

TIMES

MATERIALS

INSTRUCTIONS

STRUCTURE

EXIT

### Section A

1

2

3

4

5

6

7

8

9

10

11

12

13

14

15

16

17

18

19

20

### Section B

1

2

3

4

5

6

7

8

9

10

11

12

13

14

### Section C

Brief

Guide

1

2

Demo

Concept

1

2

A graphic designer has developed a range of logos for a new business called Read Books. The logos need to be reviewed by her colleagues.

Which one of the following is the most appropriate filenames convention for the graphic designer to use so that her colleagues can easily find the logos on the business's server?

- A ReadBooks1.pdf
- B ReadBooks\_option\_1.psd
- C Images\ option\_1.psd
- D Logo1\_Read.ai

Selected response:

Click on an answer button (A, B, C or D) or use the keyboard to select your answer.

BACK

NEXT

## Section A, Question 12

TIMES

MATERIALS

INSTRUCTIONS

STRUCTURE

EXIT

### Section A

1 2

3 4

5 6

7 8

9 10

11 12

13 14

15 16

17 18

19 20

### Section B

1 2

3 4

5 6

7 8

9 10

11 12

13 14

### Section C

Brief Guide

1 2

Demo Concept

1 2

Which Cascading Style Sheet (CSS) code is used to change paragraph text colour to red?

- A `p {text-color:red;}`
- B `p {color:red;}`
- C `paragraph {color:red;}`
- D `{paragraph-color:red;}`

Selected response:

Click on an answer button (A, B, C or D) or use the keyboard to select your answer.

BACK

NEXT

## Section A, Question 13

TIMES

MATERIALS

INSTRUCTIONS

STRUCTURE

EXIT

### Section A

1 2

3 4

5 6

7 8

9 10

11 12

13 14

15 16

17 18

19 20

### Section B

1 2

3 4

5 6

7 8

9 10

11 12

13 14

### Section C

Brief Guide

1 2

Demo Concept

1 2

Applying Edward de Bono's Six Thinking Hats to the development of a new website banner for a client indicates that a website developer is

- A making lists of ideas.
- B developing a grid of possible solutions.
- C linking one idea to another.
- D looking at ideas from different perspectives.

Selected response:

Click on an answer button (A, B, C or D) or use the keyboard to select your answer.

BACK

NEXT

## Section A, Question 14

TIMES

MATERIALS

INSTRUCTIONS

STRUCTURE

EXIT

### Section A

1

2

3

4

5

6

7

8

9

10

11

12

13

14

15

16

17

18

19

20

### Section B

1

2

3

4

5

6

7

8

9

10

11

12

13

14

### Section C

Brief

Guide

1

2

Demo

Concept

1

2

A travel journalist is writing a blog to document the people they have met and the places they have visited on a trip up the east coast of Australia.

Which one of the following writing styles is best suited to this type of blog?

A descriptive

B imaginative

C whimsical

D poetic

Selected response:

Click on an answer button (A, B, C or D) or use the keyboard to select your answer.

BACK

NEXT

## Section A, Question 15

TIMES

MATERIALS

INSTRUCTIONS

STRUCTURE

EXIT

## Section A

1

2

3

4

5

6

7

8

9

10

11

12

13

14

15

16

17

18

19

20

## Section B

1

2

3

4

5

6

7

8

9

10

11

12

13

14

## Section C

Brief

Guide

1

2

Demo

Concept

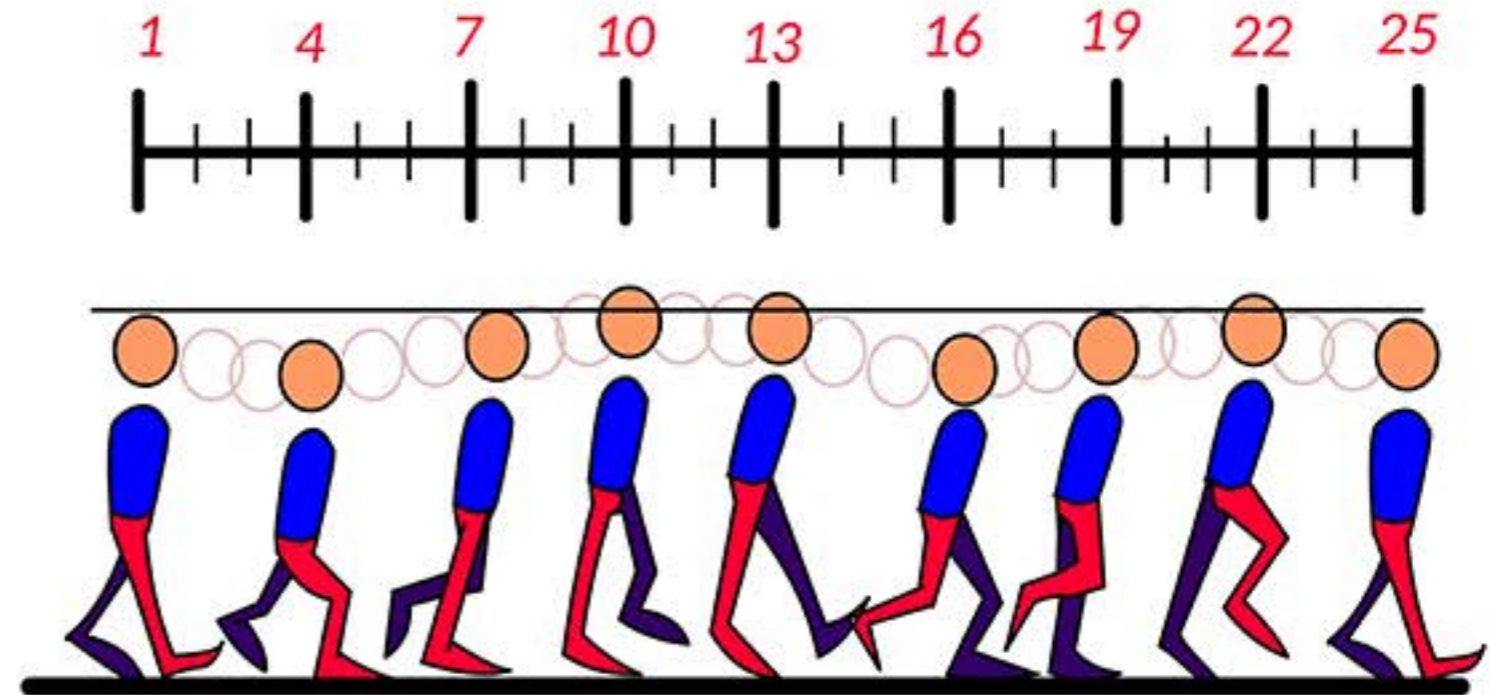
1

2

The diagram shows the breakdown of a basic walk cycle.

This animation technique is best described as

- A motion tweening.
- B rotoscoping.
- C stop motion.
- D frame by frame.



Selected response:

Click on an answer button (A, B, C or D) or use the keyboard to select your answer.

BACK

NEXT



## Section A, Question 16

TIMES

MATERIALS

INSTRUCTIONS

STRUCTURE

EXIT

### Section A

1 2

3 4

5 6

7 8

9 10

11 12

13 14

15 16

17 18

19 20

### Section B

1 2

3 4

5 6

7 8

9 10

11 12

13 14

### Section C

Brief Guide

1 2

Demo Concept

1 2

Which one of the following shows the best sequence to follow when writing content for a media product?

- A draft → refine → check → proofread → apply presentation techniques → redraft → submit
- B draft → refine → redraft → check → apply presentation techniques → proofread → submit
- C draft → apply presentation techniques → proofread → refine → redraft → check → submit
- D apply presentation techniques → draft → check → refine → redraft → submit → proofread

Selected response:

Click on an answer button (A, B, C or D) or use the keyboard to select your answer.

BACK

NEXT

## Section A, Question 17

TIMES

MATERIALS

INSTRUCTIONS

STRUCTURE

EXIT

## Section A

1 2

3 4

5 6

7 8

9 10

11 12

13 14

15 16

17 18

19 20

## Section B

1 2

3 4

5 6

7 8

9 10

11 12

13 14

## Section C

Brief Guide

1 2

Demo Concept

1 2

The CSS rule shown controls the size and the colour of a div.

What is the total width of the div?

A 450 px.

B 475 px.

C 500 px.

D 550 px.

```
div {  
    width: 450px;  
    height: 500px;  
    background-color: #ffffff;  
    padding: 25px;  
}
```

Selected response:

Click on an answer button (A, B, C or D) or use the keyboard to select your answer.

BACK

NEXT

## Section A, Question 18

TIMES

MATERIALS

INSTRUCTIONS

STRUCTURE

EXIT

### Section A

1 2

3 4

5 6

7 8

9 10

11 12

13 14

15 16

17 18

19 20

### Section B

1 2

3 4

5 6

7 8

9 10

11 12

13 14

### Section C

Brief Guide

1 2

Demo Concept

1 2

Reflecting on the application of the design process is most effective during which stage?

- A developing the brief
- B generating initial ideas
- C conducting research for inspiration
- D evaluating concepts

Selected response:

Click on an answer button (A, B, C or D) or use the keyboard to select your answer.

BACK

NEXT

## Section A, Question 19

TIMES

MATERIALS

INSTRUCTIONS

STRUCTURE

EXIT

### Section A

1

2

3

4

5

6

7

8

9

10

11

12

13

14

15

16

17

18

19

20

### Section B

1

2

3

4

5

6

7

8

9

10

11

12

13

14

### Section C

Brief

Guide

1

2

Demo

Concept

1

2

Which colour scheme is best used to increase the contrast level of a design?

- A analogous
- B monochromatic
- C complementary
- D secondary colour

Selected response:

Click on an answer button (A, B, C or D) or use the keyboard to select your answer.

BACK

NEXT

## Section A, Question 20

TIMES

MATERIALS

INSTRUCTIONS

STRUCTURE

EXIT

### Section A

- |    |    |
|----|----|
| 1  | 2  |
| 3  | 4  |
| 5  | 6  |
| 7  | 8  |
| 9  | 10 |
| 11 | 12 |
| 13 | 14 |
| 15 | 16 |
| 17 | 18 |
| 19 | 20 |

### Section B

- |    |    |
|----|----|
| 1  | 2  |
| 3  | 4  |
| 5  | 6  |
| 7  | 8  |
| 9  | 10 |
| 11 | 12 |
| 13 | 14 |

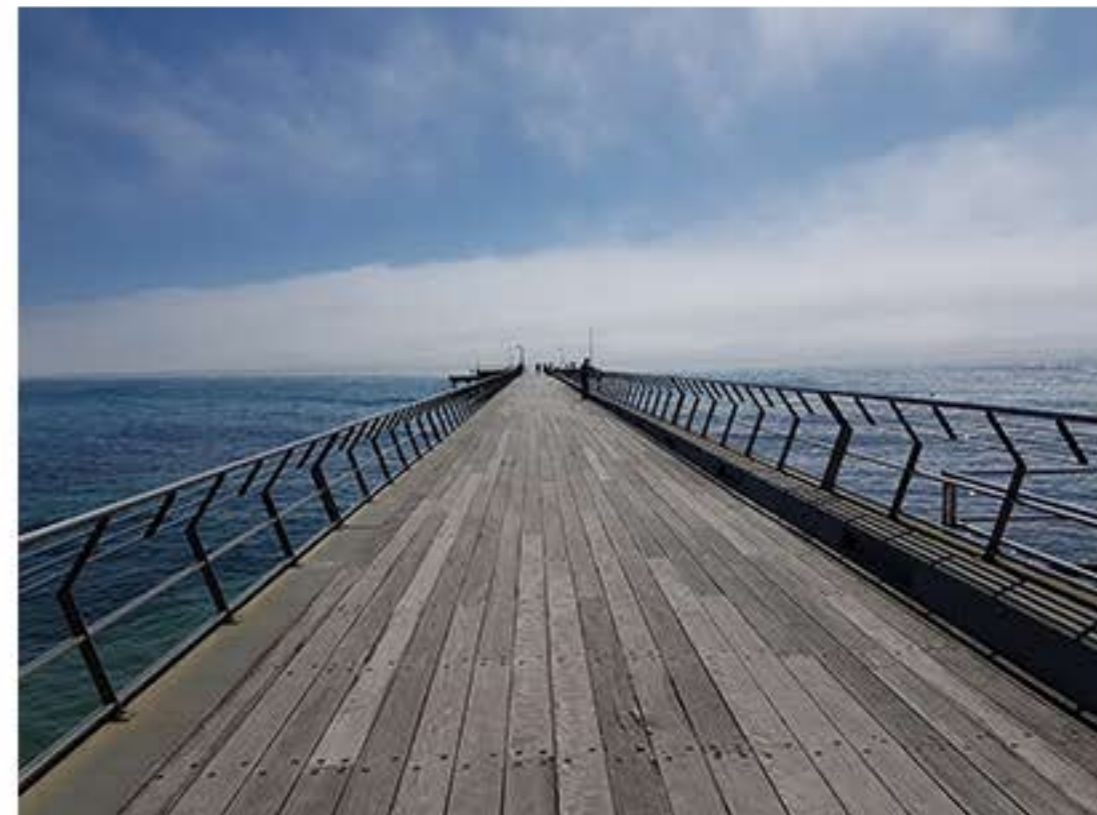
### Section C

- |       |         |
|-------|---------|
| Brief | Guide   |
| 1     | 2       |
| Demo  | Concept |
| 1     | 2       |

This image is to be used on a web page.

What would be the most appropriate file format for this image?

- A .bmp
- B .jpg
- C .swf
- D .fla



Selected response:

Click on an answer button (A, B, C or D) or use the keyboard to select your answer.

End of Section A

BACK

NEXT