

## Environmental Science

### Graded Assessment 1 COURSEWORK UNIT 3

2018

Table of Grade Distribution by Gender

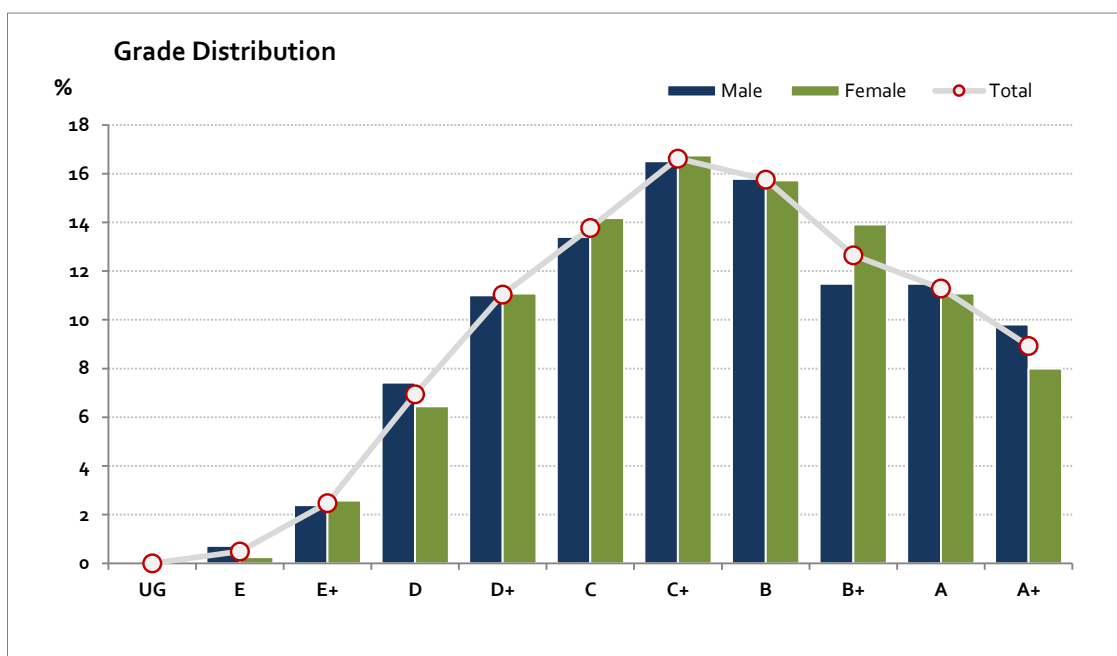
Grade		UG	E	E+	D	D+	C	C+	B	B+	A	A+	NR	Total
Male	n	0	3	10	31	46	56	69	66	48	48	41	0	418
	%	0.0	0.7	2.4	7.4	11.0	13.4	16.5	15.8	11.5	11.5	9.8	0.0	100.0
Female	n	0	1	10	25	43	55	65	61	54	43	31	0	388
	%	0.0	0.3	2.6	6.4	11.1	14.2	16.8	15.7	13.9	11.1	8.0	0.0	100.0
Gender X	n	0	0	0	0	0	0	0	0	0	0	0	0	0
	%	0.0	0.0	0.0	0.0	0.0	0.0	0.0	0.0	0.0	0.0	0.0	0.0	0.0
Total	n	0	4	20	56	89	111	134	127	102	91	72	0	806
	%	0.0	0.5	2.5	6.9	11.0	13.8	16.6	15.8	12.7	11.3	8.9	0.0	100.0
Score Ranges		0-4	5-19	20-36	37-48	49-57	58-66	67-73	74-79	80-84	85-89	90-100	N/A	Max 100

For privacy reasons, a gender with less than 5 students assessed has been assigned to the category of NR (Not Reported).

Summary Statistics:	
Mean	70.4
Std Dev	16
Median	C+

Not Assessed:	
Male	26
Female	19
Gender X	0
Total	45

Total Enrolments incl. Not Assessed:	
Male	444
Female	407
Gender X	0
Total	851



Gender X numbers are too low for a graph to be meaningful

## Environmental Science

### Graded Assessment 2 COURSEWORK UNIT 4

2018

Table of Grade Distribution by Gender

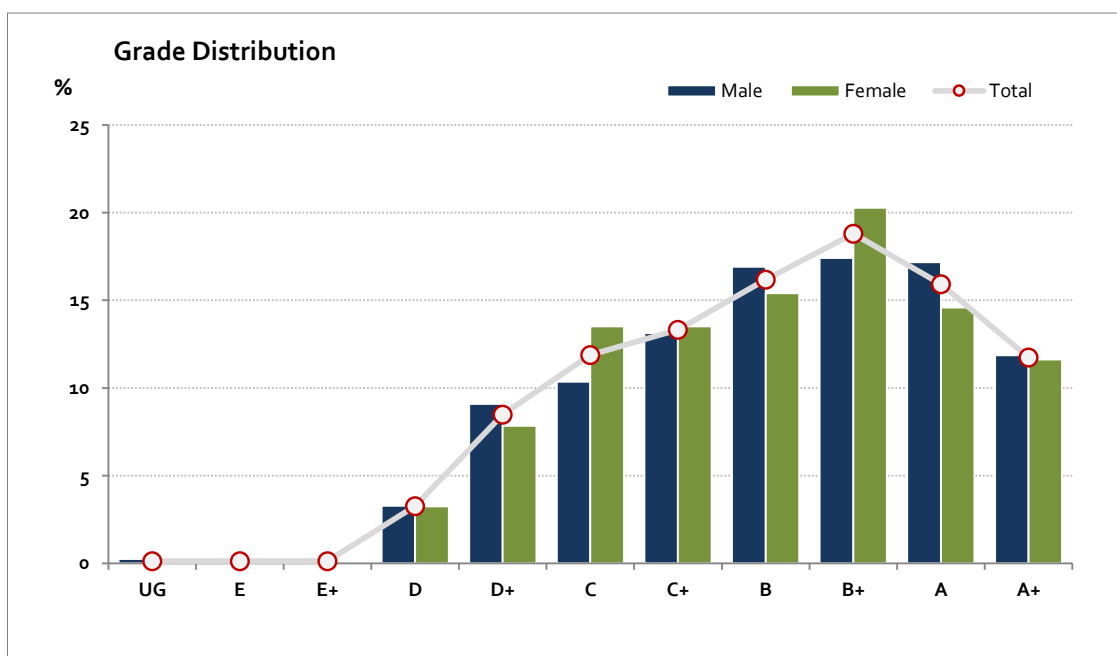
Grade		UG	E	E+	D	D+	C	C+	B	B+	A	A+	NR	Total
Male	n	1	1	1	13	36	41	52	67	69	68	47	0	396
	%	0.3	0.3	0.3	3.3	9.1	10.4	13.1	16.9	17.4	17.2	11.9	0.0	100.0
Female	n	0	0	0	12	29	50	50	57	75	54	43	0	370
	%	0.0	0.0	0.0	3.2	7.8	13.5	13.5	15.4	20.3	14.6	11.6	0.0	100.0
Gender X	n	0	0	0	0	0	0	0	0	0	0	0	0	0
	%	0.0	0.0	0.0	0.0	0.0	0.0	0.0	0.0	0.0	0.0	0.0	0.0	0.0
Total	n	1	1	1	25	65	91	102	124	144	122	90	0	766
	%	0.1	0.1	0.1	3.3	8.5	11.9	13.3	16.2	18.8	15.9	11.7	0.0	100.0
Score Ranges		0-8	9-17	18-20	21-37	38-49	50-57	58-63	64-69	70-75	76-81	82-90	N/A	Max 90

For privacy reasons, a gender with less than 5 students assessed has been assigned to the category of NR (Not Reported).

Summary Statistics:	
Mean	66.3
Std Dev	13.7
Median	B

Not Assessed:	
Male	48
Female	37
Gender X	0
Total	85

Total Enrolments incl. Not Assessed:	
Male	444
Female	407
Gender X	0
Total	851



Gender X numbers are too low for a graph to be meaningful

## Environmental Science

### Graded Assessment 3 WRITTEN EXAMINATION 2018

Table of Grade Distribution by Gender

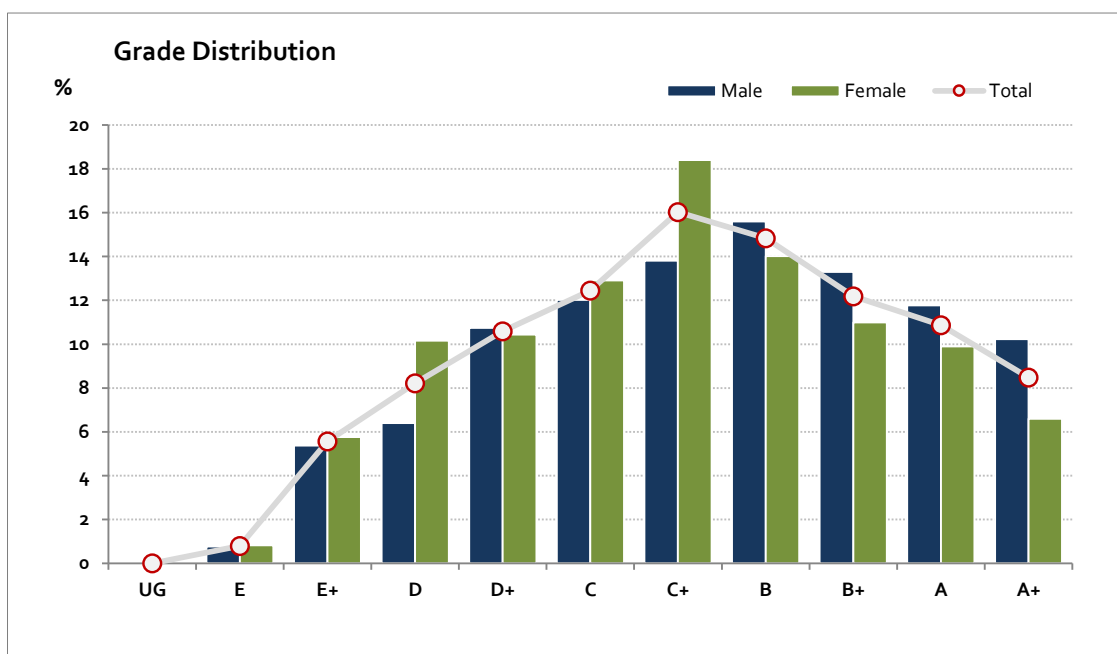
Grade	UG	E	E+	D	D+	C	C+	B	B+	A	A+	NR	Total	
<b>Male</b>	n	0	3	21	25	42	47	54	61	52	46	40	0	391
	%	0.0	0.8	5.4	6.4	10.7	12.0	13.8	15.6	13.3	11.8	10.2	0.0	100.0
<b>Female</b>	n	0	3	21	37	38	47	67	51	40	36	24	0	364
	%	0.0	0.8	5.8	10.2	10.4	12.9	18.4	14.0	11.0	9.9	6.6	0.0	100.0
<b>Gender X</b>	n	0	0	0	0	0	0	0	0	0	0	0	0	0
	%	0.0	0.0	0.0	0.0	0.0	0.0	0.0	0.0	0.0	0.0	0.0	0.0	0.0
<b>Total</b>	n	0	6	42	62	80	94	121	112	92	82	64	0	755
	%	0.0	0.8	5.6	8.2	10.6	12.5	16.0	14.8	12.2	10.9	8.5	0.0	100.0
<b>Score Ranges</b>		0-23	24-44	45-82	83-103	104-124	125-140	141-159	160-174	175-186	187-201	202-240	N/A	Max 240

For privacy reasons, a gender with less than 5 students assessed has been assigned to the category of NR (Not Reported).

Summary Statistics:	
Mean	150
Std Dev	40.5
Median	C+

Not Assessed:	
Male	53
Female	43
Gender X	0
Total	96

Total Enrolments incl. Not Assessed:	
Male	444
Female	407
Gender X	0
Total	851



Gender X numbers are too low for a graph to be meaningful